



About BlackBerry

BlackBerry is an end-to-end solution developed by Research In Motion Limited.

Founded in 1984, Research In Motion is a world leader in the wireless communications market.

For more Information

www.blackberry.com

bbeurope@rim.com



BlackBerry™



BlackBerry
in the Legal
Industry

MOBILISING THE POWER OF WIRELESS



BlackBerry is the leading wireless communications solutions for enterprise that keeps mobile professionals connected to their customers, colleagues and corporate data. It's a proven, award-winning solution that provides secure wireless connectivity* while satisfying the requirements of enterprise IT departments.

The Complete Wireless Solution for Legal Professionals

Deploying BlackBerry offers real business benefits to firms of all sizes in the legal industry. With its unique push-based wireless email and data delivery, BlackBerry gives lawyers discreet, efficient access to colleagues, clients and business information, wherever they are and whatever they are doing.

A Wireless Solution for any Law Firm

Whatever the size of your firm, deploying BlackBerry will quickly deliver a visible return on investment. Small firms and individual lawyers can easily purchase BlackBerry Wireless Handhelds™ that will enable "always on" wireless access to important business information and communications. This includes organiser, phone and web functions, plus up to 10 existing work and personal email accounts.

For larger law firms with IT departments the BlackBerry Enterprise Solution™ offers an end-to-end wireless enterprise solution that meets stringent IT security requirements. As well as built in wireless applications like email, organiser and phone, the BlackBerry development platform enables firms to wirelessly extend additional applications to lawyers on the move, such as time and billing management, CRM, case management and research tools.

BlackBerry provides wireless access to:

Wireless Email

"Push" technology means your mail finds you

Mobile Phone

Fully featured integrated phone with tri- and quad-band support**

Wireless Calendar

Keep yourself and your support staff up to date with your diary

Contacts

View your contacts and addresses

Web Browser

Access your intranet or surf the web

Task List & Memo Pad

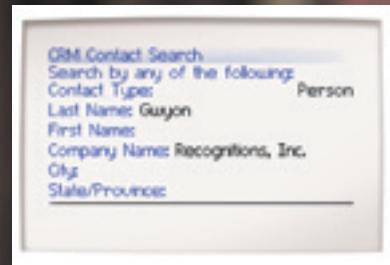
Use it to take notes or organise your day

Attachment Viewing

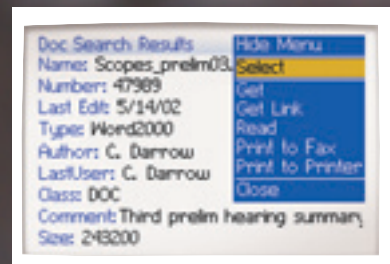
View documents in common formats

In addition, users of BlackBerry Enterprise Server™ can access:

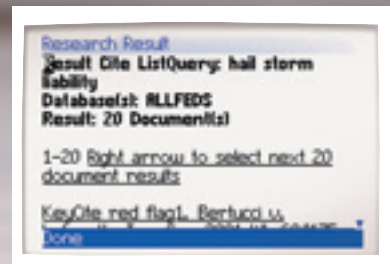
- Legal references
- Case management tools
- Time entry and billing information
- Other company documents and data



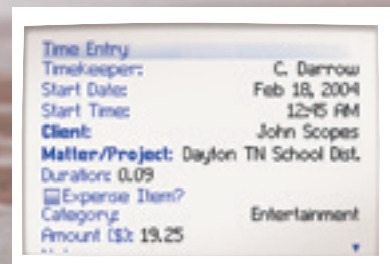
Legal contacts



Legal documents



Case management tools



Time entry and billing information

The Benefits of BlackBerry Investment

BlackBerry is a technology investment that lawyers will actually use. It's easy to use and turns dead time into productive time, helping everyone from associate to senior partner to get the job done.

Small firms and individual lawyers get a unique way to communicate with clients and colleagues, increasing efficiency and responsiveness. Larger firms can leverage the power of BlackBerry Enterprise Server to securely enable wireless access to critical business tools and applications.

BlackBerry for Lawyers

Work Discreetly

BlackBerry keeps lawyers connected and productive whether they are in client meetings or courtroom proceedings. It allows lawyers to send and receive email, read and file attachments, retrieve documents from the firm's system or conduct legal research as it's needed.

Increase Billable Hours

BlackBerry turns idle time into billable time. Lawyers can input time entry and billing information as they leave client meetings, or review important client documents from the back of a taxi.

Communicate on the Move

Staying in touch with clients and colleagues while on the move allows lawyers to act and react with no time delay. Manage situations as they develop.

Make Better Decisions

BlackBerry gives lawyers unprecedented mobile access to case study, data and important communications. This knowledge gives you the power to make the right decision quickly.

Effortless Access

No more need to hunt around for a dial-up point or find a hotspot to log-on. BlackBerry handhelds remain on and connected - wireless data and email finds you automatically.

BlackBerry for Law Firms

Increase Productivity

BlackBerry can dramatically reduce the amount of downtime in a firm. Lawyers at all levels transform "dead" time into productive time by using BlackBerry to respond to email, enter time and billing information, or access legal documentation.

Enhance Customer Satisfaction

BlackBerry connects firms to their clients. This enables your lawyers to give and get answers quickly, respond to inquiries as soon as they come in, and stay up-to-date on critical issues. All of this adds up to greater efficiency, better client service, and better client retention as a result.

Increase ROI and Profitability

By wirelessly extending existing business applications and technology, BlackBerry gives lawyers the power to develop opportunities as they arise. BlackBerry can enable firms to capture more billable hours, while also increasing lawyers' overall efficiency.

Get Ahead of the Competition

BlackBerry offers law firms a unique opportunity to increase revenue, improve collaboration and provide better client service. Investing in BlackBerry for every level of your firm will deliver performance improvements and efficiency, delivering competitive advantage right through your organisation.

Delivering Advantage to Legal Professionals

Already deployed by thousands of law firms around the world, BlackBerry is consistently popular throughout the firms that use it to stay connected.

Benefits for the Whole Firm

BlackBerry is a business productivity tool that will make lawyers' working lives easier and more efficient. It can bring efficiency and profitability improvements throughout the firm, whether you are a small practice or a big city firm. It's easy-to-use technology that cuts out inefficiency and increases billable hours.

A World of Possibilities

BlackBerry technology is improving and expanding all the time. The BlackBerry Java development platform means it is customisable by our BlackBerry partner developer companies, encouraging innovation and development.

Use it Anywhere

The latest BlackBerry handhelds offer quad-band support which means your BlackBerry handheld can work wherever you go. In addition, BlackBerry now operates on wireless networks in countries all around the world*, offering the capability for true global deployment for large firms.

More User Choice

BlackBerry is available from a wide selection of wireless service providers in the major markets of the world, and works on a range of wireless networks*. In addition, BlackBerry is now being licensed to other manufacturers, giving users further options for devices and suppliers.

Advanced Security

When used with BlackBerry Enterprise Server, your BlackBerry handheld provides advanced security features, including Triple DES encryption and handheld password protection, to protect the integrity and confidentiality of your information.



"Our use of BlackBerry is one of the rare instances when the introduction of technology has been driven by users".

Dave Turley, Global Manager, Back Office Systems and Electronic Messaging, Clifford Chance

"We have a higher standard [of security] to support, given the attorney-client relationship and the confidentiality that goes with it. BlackBerry has allowed us to do that more efficiently".

Ralph Barber, Chief Information Officer, Holland & Knight

"BlackBerry enables me to be fully informed wherever I am. I estimate that it has...improved my overall productivity by 15 per cent - and that is significant".

Richard Harvey, Partner, Richards Butler

*Check with service provider for availability, roaming arrangements and service plans. Certain features outlined in this document require a minimum version of BlackBerry Enterprise Server Software, BlackBerry Desktop Software, and/or BlackBerry Handheld Software and may require additional development or third party products and/or services for access to corporate applications. Prior to subscribing to or implementing any third party products and services, it is your responsibility to ensure that the airtime service provider you are working with has agreed to support all of the features of the third party products and services. Installation and use of third party products and services with RIM's products and services may require one or more patent, trademark or copyright licenses in order to avoid infringement of the intellectual property rights of others. You are solely responsible for determining whether such third party licenses are required and are responsible for acquiring any such licenses. To the extent that such intellectual property licenses may be required, RIM expressly recommends that you do not install or use these products and services until all such applicable licenses have been acquired by you or on your behalf. Your use of third party software shall be governed by and subject to you agreeing to the terms of separate software licenses, if any, for those products or services. Any third party products or services that are provided with RIM's products and services are provided "as is". RIM makes no representation, warranty or guarantee whatsoever in relation to the third party products or services and RIM assumes no liability whatsoever in relation to the third party products and services even if RIM has been advised of the possibility of such damages or can anticipate such damages.

**Check www.blackberry.com or your network provider for all devices available.